

POWERFLEX®

PART NUMBER

PFR5-426

DESCRIPTION

REAR DIFF REAR MOUNTING BUSH

INSTALLATION GUIDE

Contents (parts per pack):

- | | |
|-----------------------------|----------------------------|
| 1 x Polyurethane Bush | 1 x PTFE/Silicone Grease |
| 1 x Small Mild Steel Washer | 1 x Stainless Steel Sleeve |
| 1 x Large Mild Steel Washer | |

Please read the complete fitting instructions and check package components before fitment. These fitting instructions are to be used as a guide and in conjunction with workshop manual.

It is recommended that:

- all work to be carried out by a licensed technician;
- all safety precautions adhered to;
- wheel alignment to be checked and adjusted as required after any suspension work.
- All fasteners must be tensioned to manufacturer's torque settings.



Fitting Instructions:

1. Remove the original bush from the subframe.
2. Fit the polyurethane bush into the subframe pushing it in from the front towards the rear of the car so the larger diameter is facing the diff.
3. Apply the supplied grease to the bore of the bush and the outside of the stainless steel sleeve. Push the sleeve through the polyurethane bush.
4. Place the large mild steel washer on the larger diameter of the bush so it sits between the diff and the bush.
5. Place the small mild steel washer on the smaller diameter of the bush, use the original bolt and washer and refit as necessary. See Fig 1.
6. Tension all hardware to manufacturers recommended torque settings.

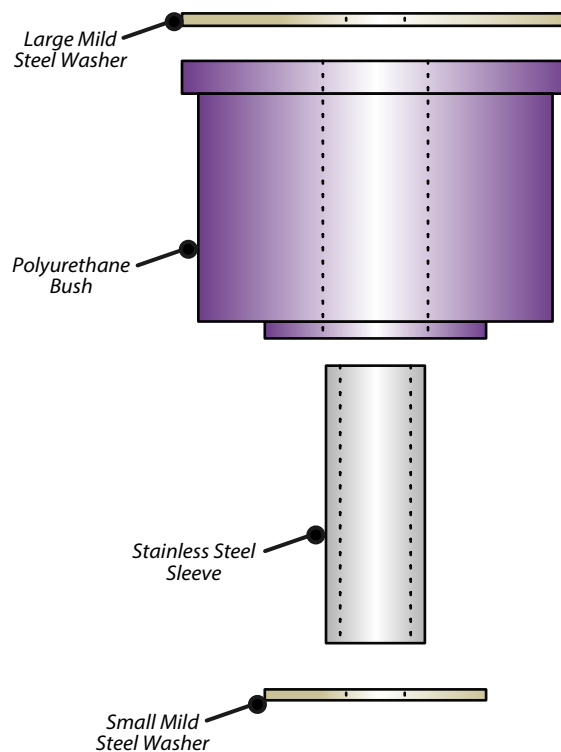


Figure 1